

Product information

High quality wood pellets boiler.

Power:	230 volt 50 Hz
Maximum consumption:	20 - 300 watt
Standard auger length:	2000 mm. (can be ordered up to 3000mm)
Weight:	15 - 40 Kg.
Info:	Modulating wood pellets burner with graphic digital controller.
Functions supported:	Circulations pump control. Hot water priority. Kwh calculating. Outside temperature compensation. Compressor cleaning. Interface to PC, multi language.

NBE order number:

Art	Output Min / max	Burner head size H x W x D
100010	2-10kw	120x120x150mm
100020	3-20kw	120x120x200mm
100030	4-30kw	130x150x250mm
100040	6-40kw	180x180x300mm
100060	6-60kw	180x180x300mm
100080	12-80kw	220x220x350mm
100100	12-100kw	220x220x350mm
100120	12-120kw	220x220x350mm

Accessories

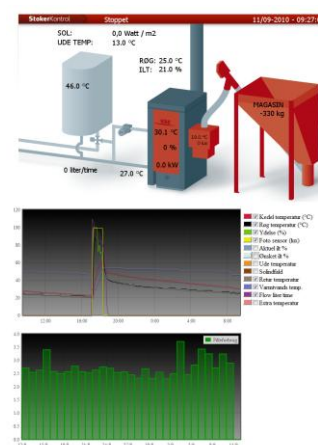
100250	250L pellets tank	60x60x130cm
100320	320L pellets tank	80x80x130 cm
100400	400L pellets tank	100x100x130cm
100901	O2 control kit	Print Board and Bosch lambda probe.
100902	Hot water priority kit	3 way motor valve ¾", temperature sensor.
100903	Boiler Flow kit	Flow meter w/ pulse, temperature sensor.
100904	Smoke temp.	Smoke temperature. sensor PT1000
100905	Temp. sensor	Boiler / return / outside / hot water.
100906	Compressor cleaning L	Pipe, valve, 8mm hose, fittings and compressor.
100907	Compressor cleaning S	Pipe, valve, 8mm hose, fittings.
100908	Smoke regulator draft	Universal, fits from 130mm to 210mm pipe
100909	Boiler shunt kit adjustable	2 way valve ¾", regulator 25-60 degrees



Burner with cover and drop shaft.



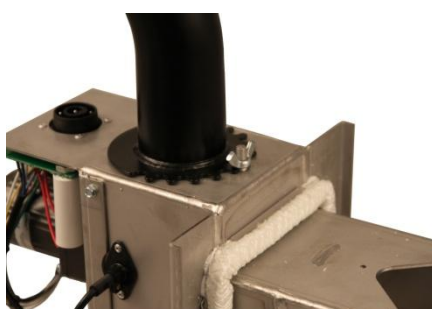
Controller with LCD display



Interface for PC



Auger cover.



Stainless steel burner head, easy access to all components.



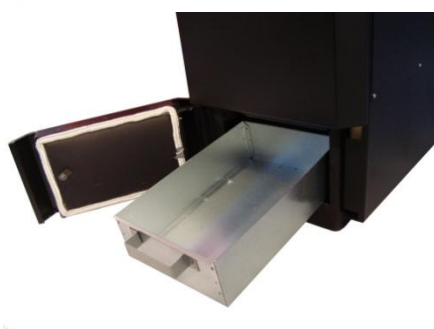
Burner cover, with NBE POWERED BY NATURE printed.

Nordjysk Bioenergi ApS
DK 9750 Oester Vraa Denmark



High quality wood pellets boiler.

High efficiency boiler, 91 - 93 %
With vertical smoke plates and a big ash tray
Special designed for wood pellet heating.
Easy access for cleaning and maintenance.
Hole for mounting of the burner, on both sides of the boiler.



Art	Black Star 10/16 kw	Black Star 20/30 kw
Order number	400110	400130
A	430mm	530mm
B	980mm	980mm
C	105mm	105mm
D	795mm	795mm
E	635mm	635mm
F	369mm	360mm
G	264mm	264mm
H	630mm	695mm
Connection	1 ¼"	1 ¼"
Thermo well	½"	½"
tapping	½"	½"
Smoke pipe	130mm	150mm
Hole for burner W	125mm	155mm
Hole for burner H	125mm	145mm
Weight	166kg	197kg
Water content	40L	55L

