



CLX Portal Registration

The Danfoss CLX Portal can be reached at <http://clxportal.danfoss.com>

Guideline to upload from TLX Pro, TLX Pro+, DLX, DLX UL, CLX Home, CLX Home GM, CLX Standard, CLX Standard GM and ComLynx Weblogger.



Upload to the CLX Portal from a TLX Pro (+) inverter

It is assumed that the TLX Pro (+) inverter is up and running, and connected to the internet.

To sign up for the portal as a new user click on [\[>> No login yet?\]](#). On the new screen, please enter the required information. Accept the terms of use and click [\[Register\]](#). An e-mail is subsequently sent to the e-mail address provided. By clicking on the link in the email, registration is completed.

Log on to the CLX portal. Create your plant by clicking [\[New plant\]](#) and enter plant data. Fields marked with * are compulsory. Click [\[Save\]](#).

By selecting the field "Public" the PV system is visible to all users of the CLX Portal

Next, select the tab [\[Topology\]](#), followed by the tab [\[information\]](#). Here you will find details on FTP server, user and password, which you need to register in the TLX Pro (+) web interface.

FTP Server: 213.239.227.43

User: tlxpro_6_506

Password: XX7B-15K6

Data from data logger or inverter could be loaded into the portal as follows:
Following settings have to be made in the ComLynx Weblogger:

- Type: CLX Portal
- Server: 213.239.227.43
- Portal code: XX7B-15K6

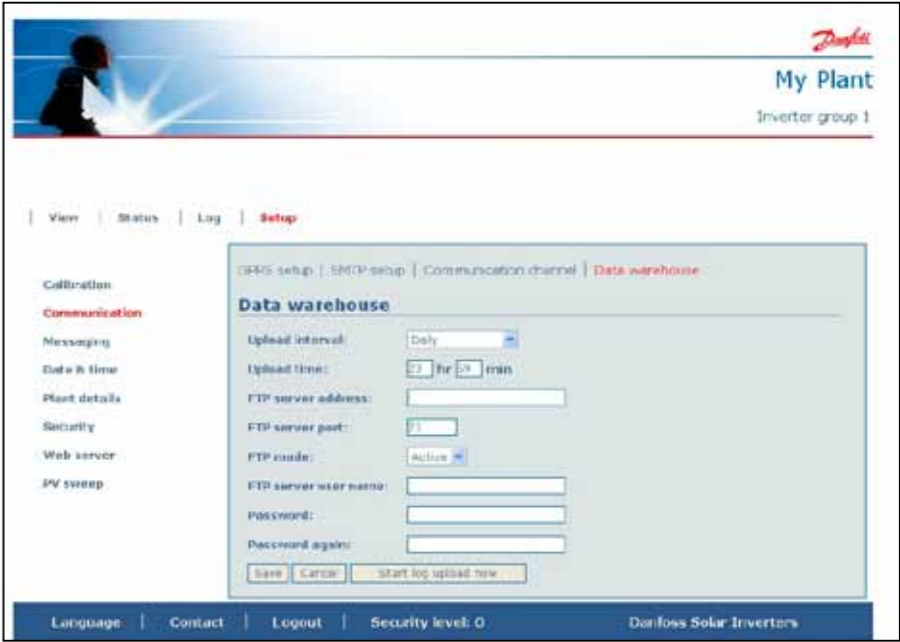
Then open the menu section „FTP-Upload“ and activate the upload for this recipient

Following values have to be configured in the inverter Danfoss TLX Pro/DLX:

- FTP Server: 213.239.227.43
- User: tlxpro_6_506
- Password: XX7B-15K6

Log on to the TLX Pro (+) inverter.
Select Plant-level [Setup](#) -> [Communications](#) -> [Data Warehouse](#) and enter the information from the CLX portal. Press [\[Save\]](#) to confirm the entry.

Under certain circumstances it may take up to 4 hours from registration of your plant/inverter until the data is visible on the CLX portal.



Click [\[Start log upload now\]](#) to initiate the first upload.

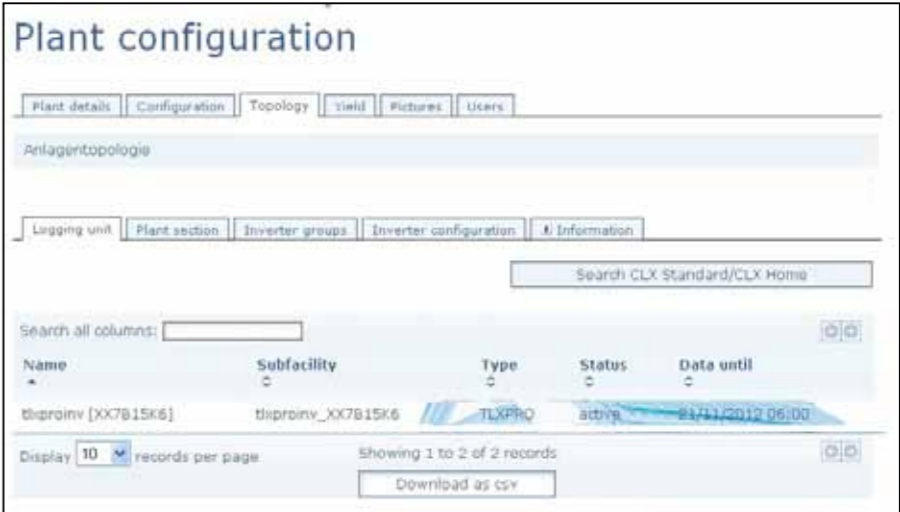
The status of the upload is stated under [Status](#) -> [Upload Status](#):

If the TLX Pro (+) inverter is configured to hourly upload and no upload errors have been reported, the data logged by the inverter will appear on the CLX Portal under your plant details.

1 minute logging interval is not supported by the CLX Portal.

To test the upload select [force send report](#). This will trigger the uploading of a report. If everything is set-up correctly the CLX Portal will receive the data.

On the CLX Portal find your plant. Under [<Topology>](#) [<Logging-unit>](#) you will find your inverter (here with the identifier: tlxproinv [\[XX7B15K6\]](#))



Setup of the DLX and DLX UL inverter

It is assumed that the DLX and DLX UL inverter is up and running, and connected the internet.

To sign up for the portal as a new user click on [>> No login yet?]. On the new screen, please enter the required information. Accept the terms of use and click [Register]. An e-mail is subsequently sent to the e-mail address provided. By clicking on the link in the email, registration is completed.

Log on to the CLX portal. Create your plant by clicking [New plant] and enter plant data. Fields marked with * are compulsory. Click [Save].

By selecting the field “Public” the PV system is visible to all users of the CLX Portal

Next, select the tab [Topology], followed by the tab [information]. Here you will find details on FTP server, user and password, which you need to register in the DLX web interface.
FTP Server: 213.239.227.43
User: tlxpro_6_506
Password: XX7B-15K6

Data from data logger or inverter could be loaded into the portal as follows:
Following settings have to be made in the ComLynx Weblogger:
- Type: CLX Portal
- Server: 213.239.227.43
- Portal code: XX7B-15K6
Then open the menu section „FTP-Upload“ and activate the upload for this recipient
Following values have to be configured in the inverter Danfoss TLX Pro/DLX:
- FTP Server: 213.239.227.43
- User: tlxpro_6_506
- Password: XX7B-15K6

Please note that a DLX and DLX UL inverter is registered as a TLX Pro inverter. This has no influence on performance.

Next configure the FTP connection on the DLX and DLX UL inverter. You can configure the FTP settings, either from the display or the web interface

On the display or web interface, you must log-in with the owner password (default 0003) (you can also use a higher ranking password).
The Inverter must be set to Master to enable FTP upload.

Description	Value
FTP server IP	
Username	
Password	
Interval	None/Hourly
Notification Time	20 h
Notification Time	30 m
Group name	Rooftop
Force send report	No/Yes

INVERTER ALARM SETUP

Please enter the information from the CLX portal and press [Save].

If everything is set-up correctly you will see the inverter on the CLX Portal within half an hour.
On the CLX Portal find your plant. Under <Topology> <Logging-unit> you will find your inverter (here with the identifier: dlxproinv [XX7B15K6])

Plant configuration				
Plant details	Configuration	Topology	Field	Pictures
Anlagen-topologie				
Logging unit	Plant section	Inverter groups	Inverter configuration	Information
Search CLX Standard/CLX Home				
Search all columns:				
Name	Subfacility	Type	Status	Data until
dlxinv [XX7B15K6]	dlxinv_XX7B15K6	DLX	Active	26/11/2012 00:00
Display 10 records per page Showing 1 to 2 of 2 records Download as csv				

Under certain circumstances it may take up to 4 hours from registration of your plant/inverter until the data is visible on the CLX portal.

Setup of a CLX Home unit to upload to the CLX Portal

It is assumed the units are installed and connected to the internet.

Installation of the CLX Home unit as well as upload to the CLX Portal from the units is described in the installation films, found on www.Danfoss.com/solar.

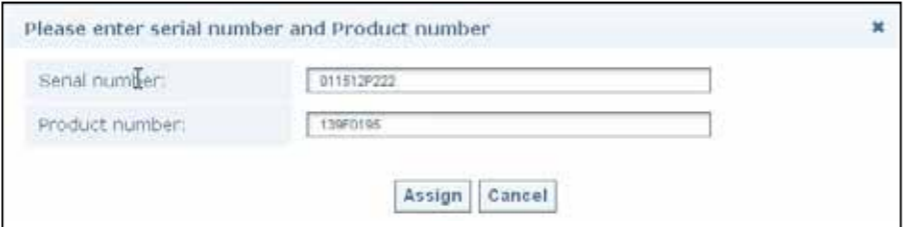
To sign up for the portal as a new user click on [\[>> No login yet?\]](#). On the new screen, please enter the required information. Accept the terms of use and click [\[Register\]](#). An e-mail is subsequently sent to the e-mail address provided. By clicking on the link in the email, registration is completed.

CLX Home

Log on to the CLX portal. Create your plant by clicking [\[New plant\]](#) and enter plant data. Fields marked with * are compulsory. Click [\[Save\]](#).

By selecting the field “Public” the PV system is visible to all users of the CLX Portal

Once created, select [Topology -> logging unit](#) and [\[search for a new CLX Home/Standard\]](#). When prompted; enter the serial number. The serial number and the MAC address can be found on the label on the back of the CLX unit, or via [\[Settings -> About\]](#) on the Danfoss SolarApp. Additionally enter the product number. For all CLX home units, the product number is: **139F0195**.



Once connected to the internet, the CLX Home automatically registers on the CLX Portal, hence no configuration need take place on the unit.

Settings About Hide	
Serial	139F0195011512P222
MAC address	bc:a4:e1:00:27:47
SW version	1.0.6.11037
HW version	1.2
Client version	10229

Press [\[Assign\]](#) and your CLX Home unit is now assigned to the newly created PV plant.

Plant configuration				
Plant details Configuration Topology Yield Pictures Users				
Anlagentopologie				
Logging unit Plant section Inverter groups Inverter configuration Information				
<input type="text" value="Search CLX Standard/CLX Home"/>				
Search all columns: <input type="text"/>				
Name	Subfacility	Type	Status	Data until
139F0195.009001P252	139F0195.009001P252	CLX	active	06/11/2012 23:20
Display 10 records per page Showing 1 to 2 of 2 records Download as csv				

If the CLX Home unit cannot be located, wait a few more minutes before retrying. It may take up to one hour before the unit is available. The CLX Home unit will automatically upload data hourly.

CLX Standard, CLX Home GM or CLX Standard GM

It is assumed the units are installed and connected to the internet.

Installation of the CLX Home GM and CLX Standard (GM) units as well as upload to the CLX Portal from the units is described in the installation films, found on www.Danfoss.com/solar.

To sign up for the portal as a new user click on [\[>> No login yet?\]](#). On the new screen, please enter the required information. Accept the terms of use and click [\[Register\]](#). An e-mail is subsequently sent to the e-mail address provided. By clicking on the link in the email, registration is completed.

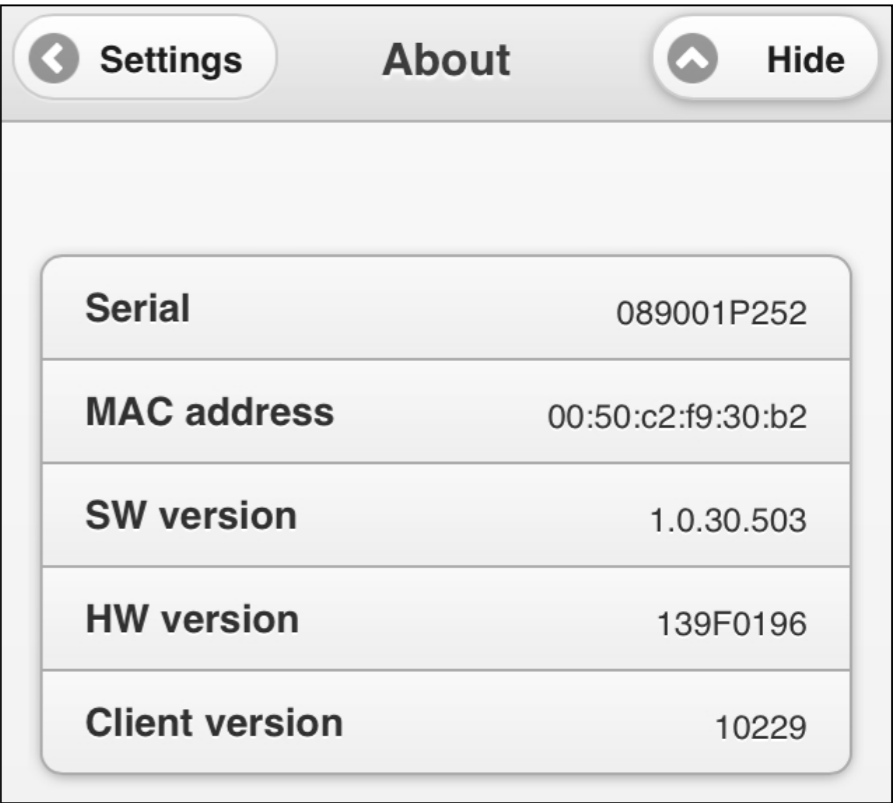
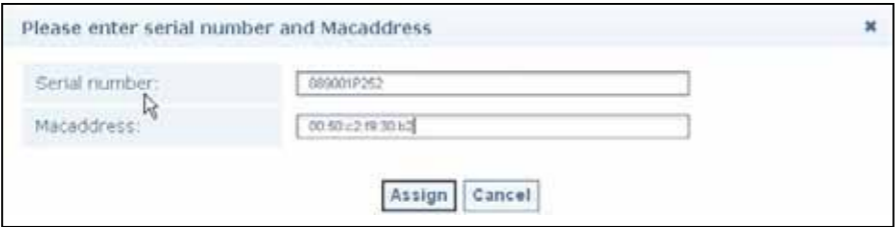
The easiest way to enable upload to the CLX Portal on the units is via the display:

- Select [\[Portal -> Connect now\]](#)

Log on to the CLX Portal. Create your plant by clicking [\[New plant\]](#) and enter plant data. Fields marked with * are compulsory. Click [\[Save\]](#).

By selecting the field "Public" the PV system is visible to all users of the CLX Portal

Once created, select [Topology -> logging unit](#) and [\[search for a new CLX Home/Standard\]](#). Enter the serial number, only the last 10 digits are used. The serial number and the MAC address can be found on the label on the back of the CLX unit, or via [\[Settings -> About\]](#) on the Danfoss SolarApp.



Serial	089001P252
MAC address	00:50:c2:f9:30:b2
SW version	1.0.30.503
HW version	139F0196
Client version	10229

Press [\[Assign\]](#) and the unit is now assigned to the PV plant on the CLX Portal.



Name	Subfacility	Type	Status	Data until
139F0196.089001P252	139F0196.089001P252	CLX	active	06/11/2012 23:20

If the CLX unit is not found, wait a few more minutes before retrying. It may take up to an hour before the unit is available. The CLX unit will automatically upload data at midnight.

ComLynx Weblogger

It is assumed that the unit is installed and connected to the internet and scan for inverters has been carried out.

To sign up for the portal as a new user click on [\[>> No login yet?\]](#). On the new screen, please enter the required information. Accept the terms of use and click [\[Register\]](#). An e-mail is subsequently sent to the e-mail address provided. By clicking on the link in the email, registration is completed.

Log on to the CLX portal. Create your plant by clicking [\[New plant\]](#) and enter plant data. Fields marked with * are compulsory. Click [\[Save\]](#).

By selecting the field “Public” the PV system is visible to all users of the CLX Portal

Once created, select **Topology**, followed by the tab **[information]**. Here you can find the data you need to enter in the ComLynx Weblogger's web interface (server and portal code):

Data from data logger or inverter could be loaded into the portal as follows:

Following settings have to be made in the ComLynx Weblogger:

- Type: CLX Portal
- Server: 213.239.227.43
- Portal code: XX78-15K6

Then open the menu section „FTP-Upload“ and activate the upload for this recipient

Following values have to be configured in the inverter Danfoss TLX Pro/DLX:

- FTP Server: 213.239.227.43
- User: tlxpro_6_506
- Password: XX78-15K6

Log on to the ComLynx Weblogger and on the web interface navigate to [configuration](#) -> [message recipients](#) and choose [\[new\]](#). As type choose SC web portal and enter the information given by the CLX portal (server and portal code).

Go to configuration → **ftp upload** and enable the upload for the new message recipient.

CLX Portal upload requires minimum version 1.3.2, please contact inverter-hotline@danfoss.com for an offer for weblogger software update.

Under certain circumstances it may take up to 4 hours from registration of your plant/inverter until the data is visible on the CLX portal.

Notes



Danfoss Solar Inverters A/S • Ulsnaes 1 • 6300 Graasten • Denmark
Phone: +45 7488 1300 • Fax: +45 7488 1301 • E-mail: solar-inverters@danfoss.com • www.danfoss.com/solar

Danfoss påtager sig intet ansvar for mulige fejl i kataloger, brochurer og andet trykt materiale. Danfoss forbeholder sig ret til uden forudgående varsel at foretage ændringer i sine produkter, herunder i produkter, som allerede er i ordre, såfremt dette kan ske uden at ændre allerede aftalte specifikationer.
Alle varemærker i dette materiale tilhører de respektive virksomheder. Danfoss og Danfoss logoet er varemærker tilhørende Danfoss A/S. Alle rettigheder forbeholdes.